



**10.2+ ACRES WEST FORSYTH COUNTY  
UPPER BETHELVIEW RD \* 360+ FEET FRONTAGE**

**EXCELLENT SENIOR LIVING SITE**

**7/10 MILE SOUTH OF GREEN'S CORNER**

**ZONED CBD**

**GENTLE TOPOGRAPHY**

**MATURE OAK TREES**

**EASY ACCESS TO SR 400, SHOPPING & RESTAURANTS**

**MORE LAND AVAILABLE**

**PRICE: \$180,000. PER ACRE**

**CONTACT: DAN WOLF**

**WOLF REALTY, INC.**

**770-888-8889**

**6010 PROVIDENCE LANE, CUMMING, GEORGIA 30040  
PHONE: 770-888-8889 • EMAIL: DAN@WOLF-REALTY.COM  
WWW.WOLF-REALTY.COM**



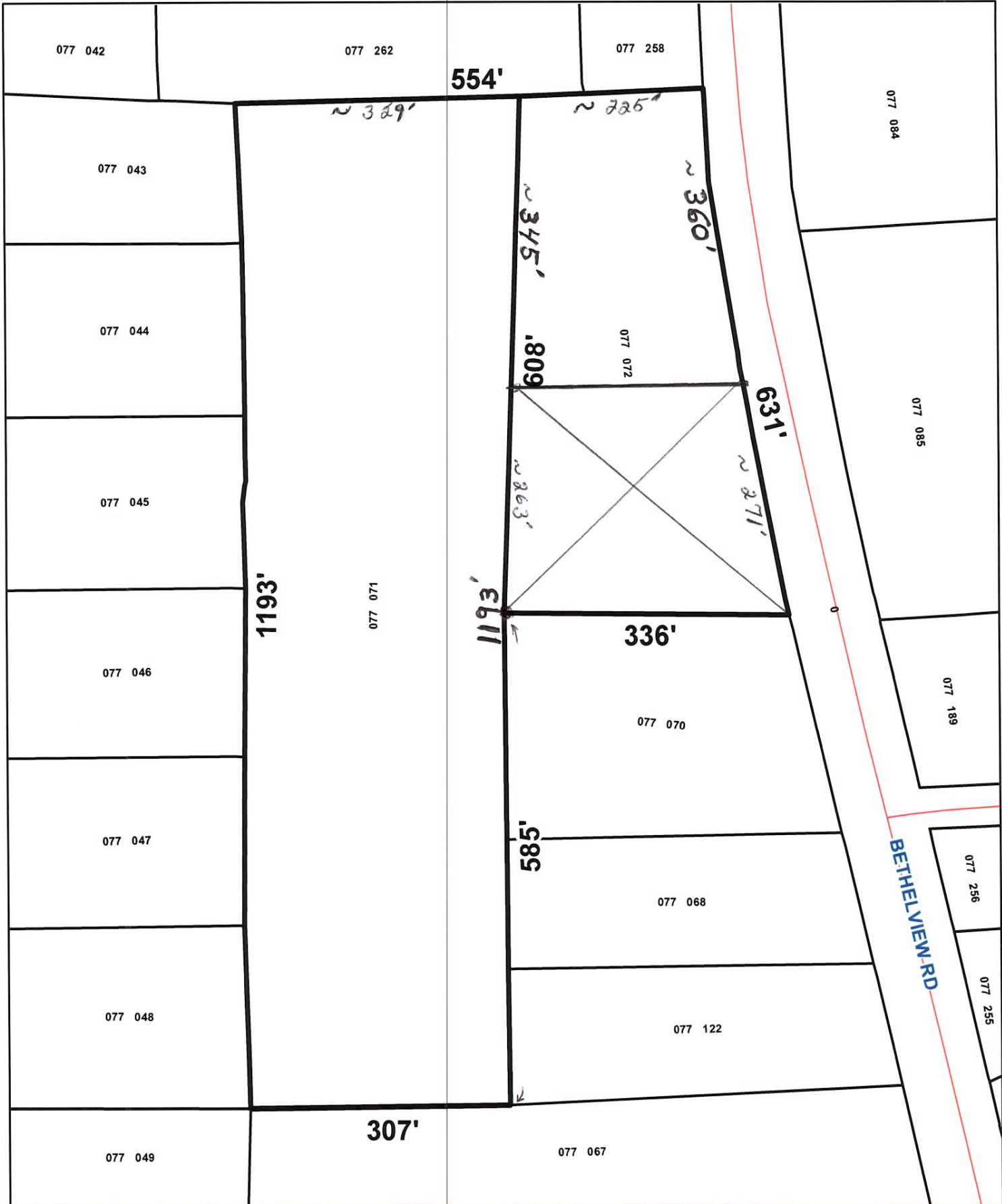
Legend	
	Tax Parcel
	Streets
	Lake Lamer

  
 1 inch = 543 feet

**Forsyth County Georgia**  
**GIS Department**

The information contained on this map is derived from the GIS Department of Forsyth County, Georgia. It is provided as a public service and is not intended to be used for any other purpose. The information is provided "as is" and is not guaranteed to be accurate or complete. The user assumes all responsibility for the use of this information. No liability is assumed for any errors or omissions. This map is provided as a public service and is not intended to be used for any other purpose. The information is provided "as is" and is not guaranteed to be accurate or complete. The user assumes all responsibility for the use of this information. No liability is assumed for any errors or omissions.





THE INFORMATION, CONTENT AND SUBJECT MATTER INCLUDED ON THIS MAP HAS BEEN COMPILED FROM A VARIETY OF SOURCES AND IS SUBJECT TO CHANGE WITHOUT NOTICE AS A RESULT OF UPDATES, REVISIONS AND CORRECTIONS. FORSYTH COUNTY MAKES NO WARRANTIES, REPRESENTATIONS OR ENDORSEMENTS, EITHER EXPRESS OR IMPLIED AS TO THE ACCURACY, COMPLETENESS, TIMELINESS, OR RIGHTS TO THE USE OF SUCH INFORMATION AND EXPRESSLY DISCLAIMS ALL SUCH WARRANTIES OF ANY KIND, INCLUDING AND NOT LIMITED TO IMPLIED WARRANTIES OF MERCHANTABILITY OR FITNESS FOR A PARTICULAR PURPOSE. FORSYTH COUNTY SHALL NOT BE LIABLE FOR ANY GENERAL, SPECIAL, DIRECT, INDIRECT, INCIDENTAL, OR CONSEQUENTIAL DAMAGES, INCLUDING AND NOT LIMITED TO, LOST REVENUES, LOST PROFITS, OR SOME OTHER LOSSES OF ANY KIND ARISING OR RESULTING FROM THE RELIANCE ON THE MAP OR INFORMATION CONTAINED ON THIS MAP. ANY USE OF THIS MAP OR INFORMATION CONTAINED ON THIS MAP IS EXPRESSLY PROHIBITED EXCEPT BY WRITTEN PERMISSION OF FORSYTH COUNTY.

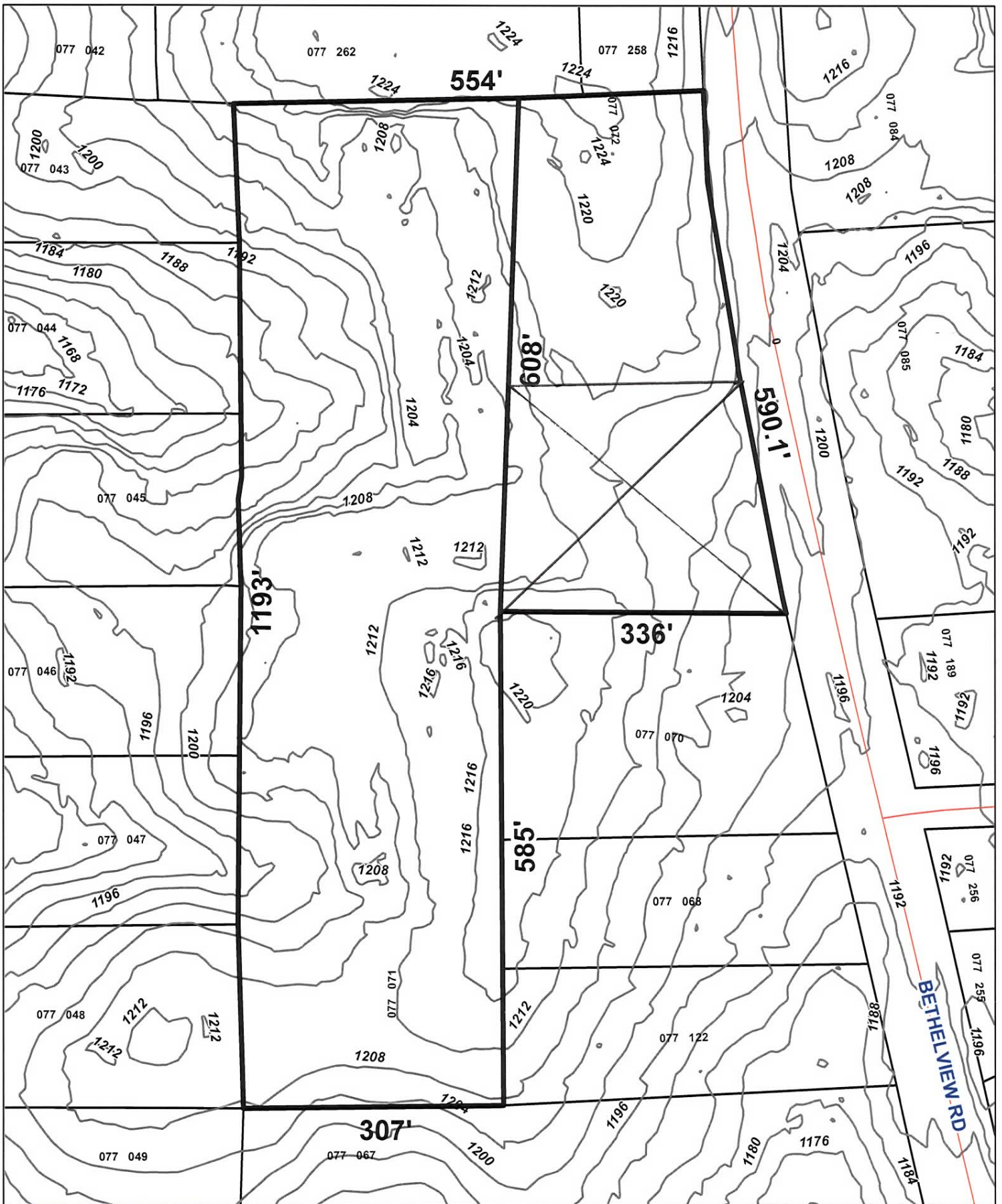
**Legend**

-  TAX PARCELS
-  ROADS
-  STREAMS
-  WATERBODY



**Forsyth County Georgia  
GIS Department**





"THE INFORMATION, CONTENT AND SUBJECT MATTER INCLUDED ON THIS MAP HAS BEEN COMPILED FROM A VARIETY OF SOURCES AND IS SUBJECT TO CHANGE WITHOUT NOTICE AS A RESULT OF UPDATES, REVISIONS AND CORRECTIONS. FORSYTH COUNTY MAKES NO WARRANTIES, REPRESENTATIONS OR ENCOURAGEMENTS, WHETHER EXPRESS OR IMPLIED, AS TO THE ACCURACY, COMPLETENESS, TIMELINESS OR FITNESS FOR THE USE OF SUCH INFORMATION. ANY USER OF THIS INFORMATION OR SUBJECT MATTER SHALL BE RESPONSIBLE FOR VERIFYING THE ACCURACY, COMPLETENESS, TIMELINESS OR FITNESS FOR A PARTICULAR PURPOSE. FORSYTH COUNTY SHALL NOT BE LIABLE FOR ANY GENERAL, SPECIAL, DIRECT, INDIRECT, INCIDENTAL, EXEMPLARY OR CONSEQUENTIAL DAMAGES, INCLUDING, AND NOT LIMITED TO, LOST REVENUES, LOST PROFITS, OR MONETARY LOSSES OF ANY KIND ARISING OR RESULTING FROM THE RELIANCE UPON, USE, MISUSE, OR INABILITY TO USE THIS MAP OR THE INFORMATION, CONTENT OR SUBJECT MATTER INCLUDED ON THIS MAP. ANY SALE OF THIS MAP OR INFORMATION CONTAINED ON THIS MAP IS EXPRESSLY PROHIBITED EXCEPT BY WRITTEN PERMISSION OF FORSYTH COUNTY."

- Legend**
-  Contour 4'
  -  TAX PARCELS
  -  ROADS
  -  STREAMS
  -  WATERBODY



**Forsyth County Georgia  
GIS Department**



